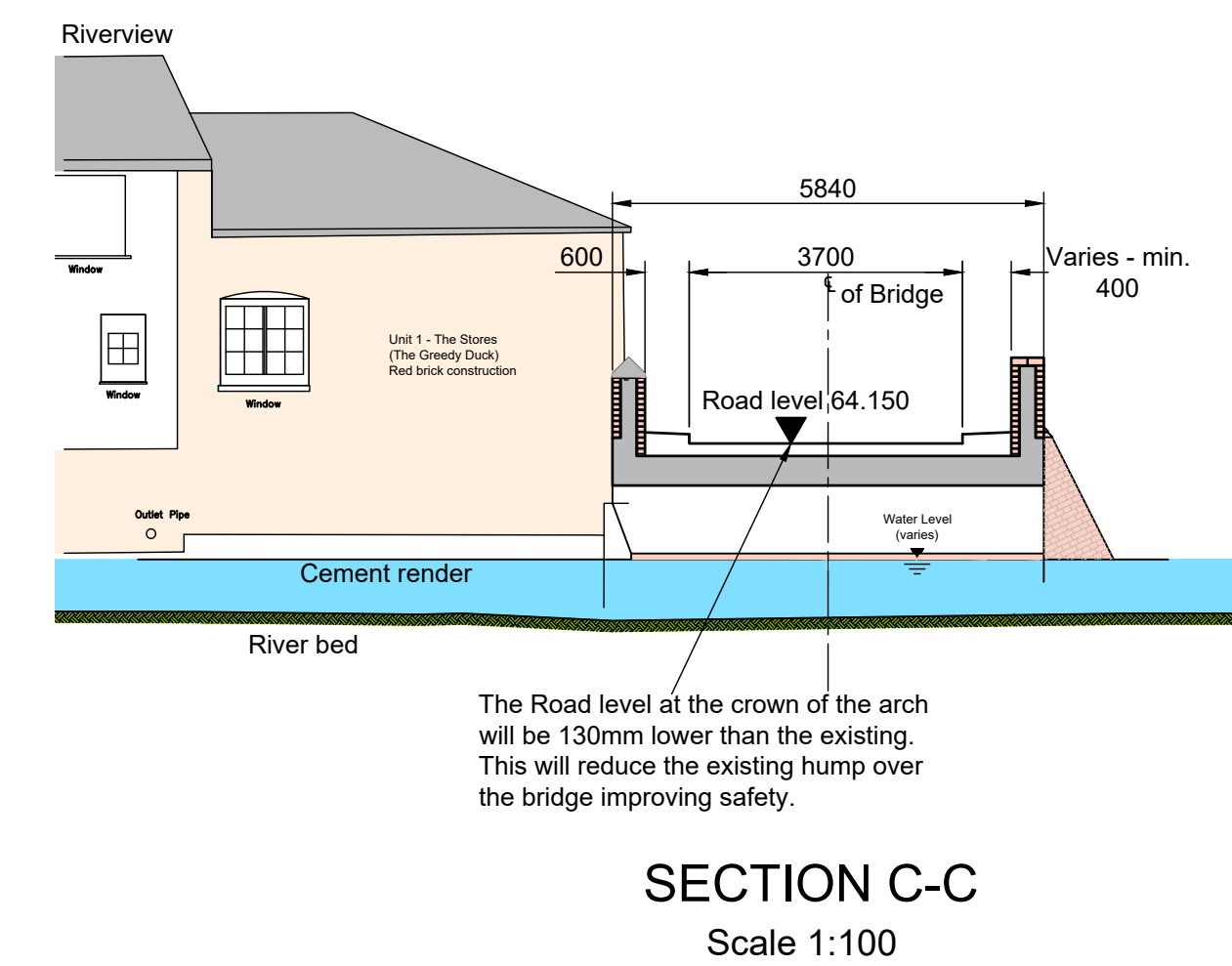
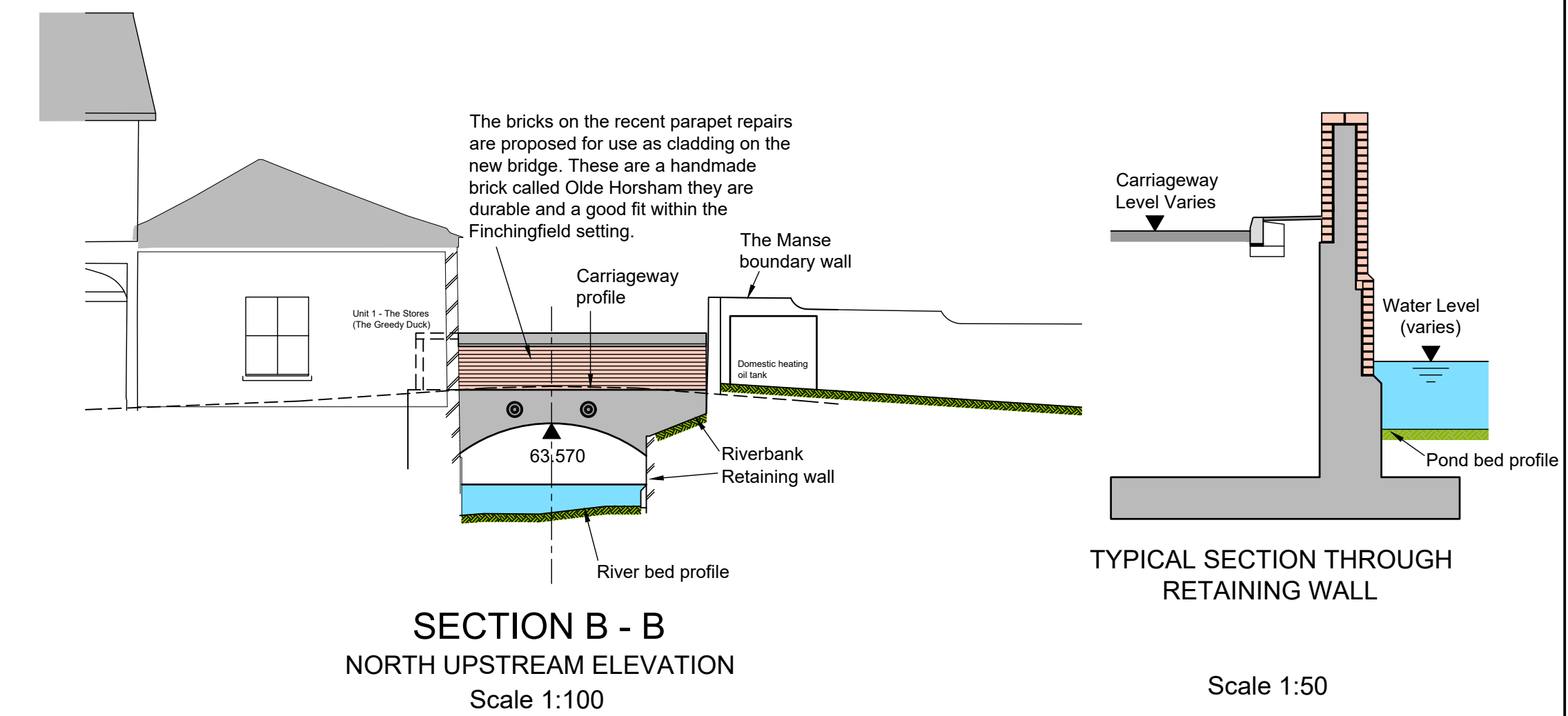


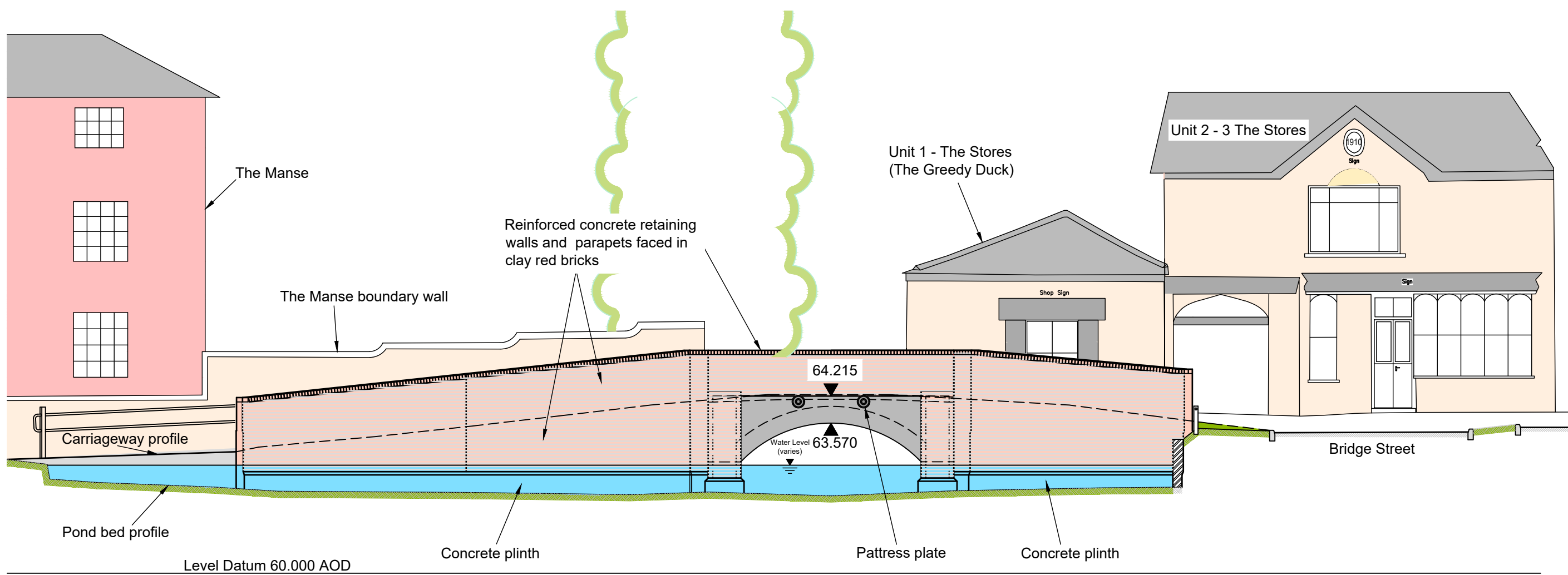
PLAN AT CARRIAGEWAY/POND LEVELS

Scale 1:100

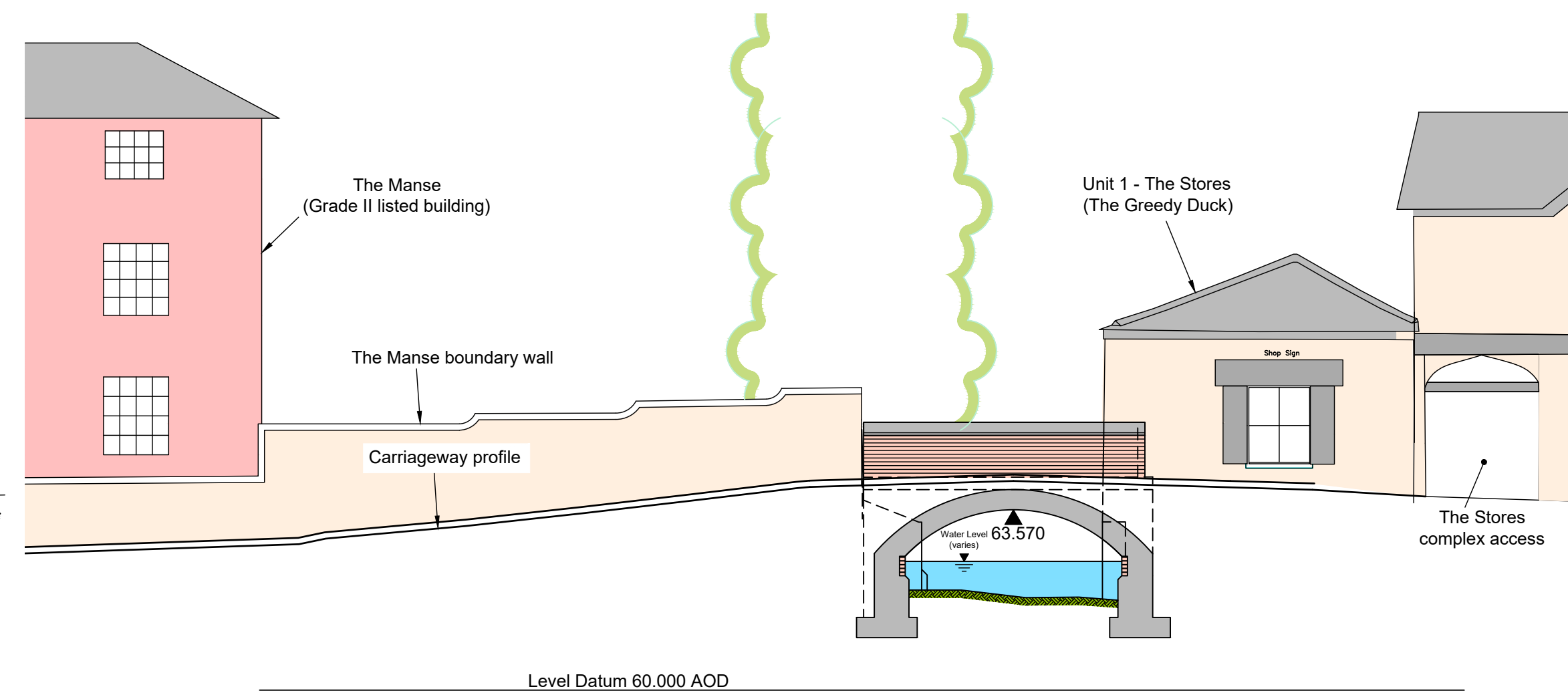


The proposed width between kerbs is slightly narrower than the current width between parapets. This has been done to provide smooth lines approaching and passing over the structure. Verges will be provided to protect the parapets and adjacent building from impact by vehicles.

The new bridge will be constructed in reinforced concrete but outwardly it will be clad in brick. The current view across the pond towards the bridge will be maintained by the appearance of the new bridge.



SECTION A-A
SOUTH / DOWNSTREAM ELEVATION
Scale 1:100



SECTION D-D
Scale 1:100

- NOTES
1. All dimensions are in millimetres unless noted otherwise.
 2. Levels are in metres above Ordnance Survey datum.

Rev.	Date	Description of revision	Drawn	Checked	Review'd	Approv'd

DRAWING STATUS

FOR INFORMATION



Essex Highways
Seax House, 2nd Floor, Victoria Road South,
Chelmsford, CM1 1QH - Tel: 0345 6037631 © Essex County Council

SCHEME TITLE

**FINCHINGFIELD BRIDGE
ECC BRIDGE No. 026**

DRAWING TITLE

**PROPOSED GENERAL
ARRANGEMENT
FOR PUBLIC INFORMATION EVENT**

DESIGNED	DRAWN	CHECKED	REVIEWED	APPROVED

DRAWING UNITS U.N.O.
DIMENSIONS IN MILLIMETRES
LEVELS IN METRES

SCALE AT A1 (841x594mm)
As Shown

DRAWING No. **BR0026-PI-01** REV. -

